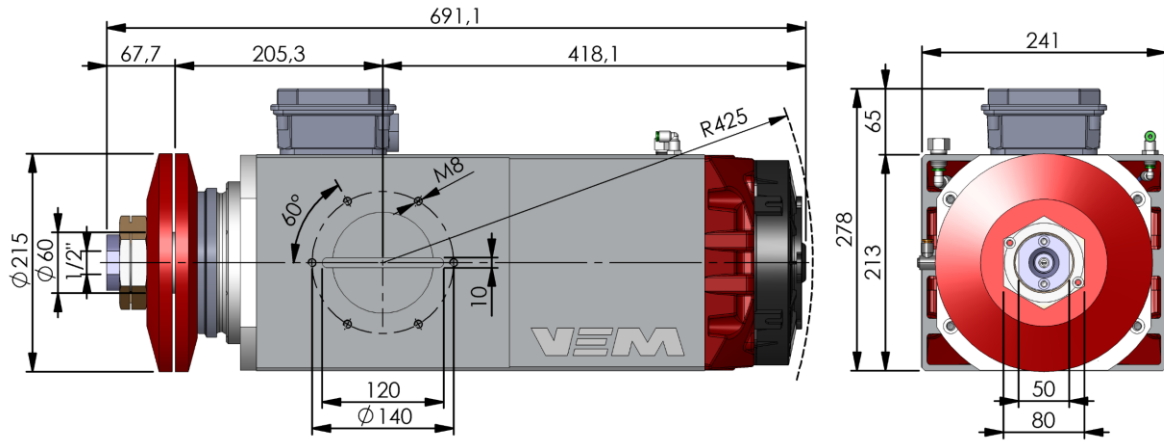


Ingombri – Overall dimensions

IP55



Le caratteristiche e le dimensioni inserite nel presente catalogo sono indicative e suscettibili di variazioni – Verniciatura su richiesta. Features and overall dimensions are subject to change – Painting by request.

Dati principali – Main Specification

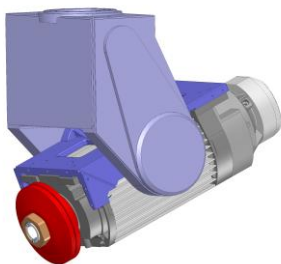
Potenza	Power (min / max)	16,5 ÷ 25 kW
Coppia	Torque	110 Nm
Vel. massima	Max Speed	8.000 rpm
Cambio utensile	Tool attachment	1/2"
Lubrificazione	Lubrication	Grease for life
Tipo di unità	Motor unit	Induction
Raffreddamento	Cooling	Servo ventilated
Cambio utensile	Tool change	Manual

Caratteristiche – Features

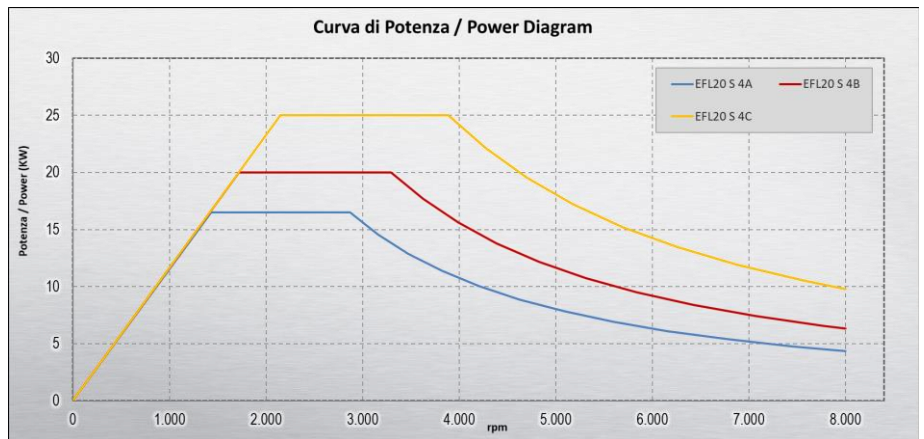
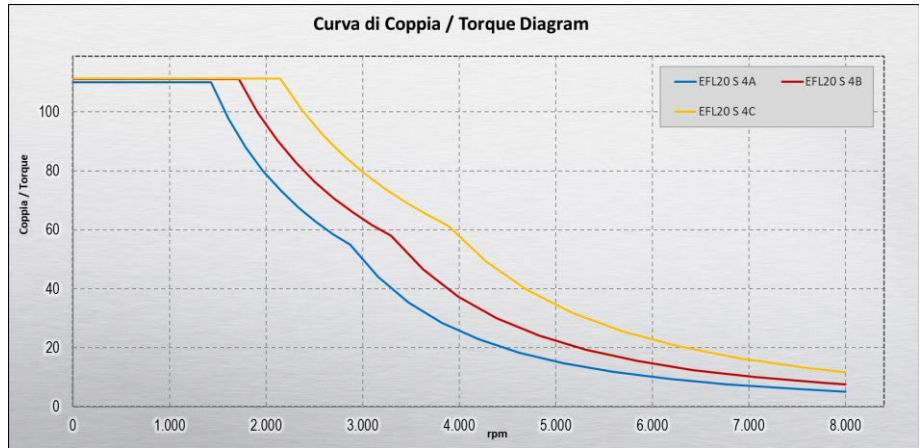
Adattatore 1/2" in acciaio INOX intercambiabile	Interchangeable stainless steel 1/2" adapter
Sistema di isolamento per azionamento tramite inverter	Inverter duty insulation system
Elettroventola IP 68	Electro fan IP 68
Giunto rotante integrato, senza contatto	Contactless rotating joint, integrated

Option

Typical application



Curve di coppia e potenza – Torque and Power diagram



Ref.	Mandrino Spindle	kW	Cv	Coppia/Torque [Nm]	I [Amp @400V]	Rpm nom	F nom [Hz]	Rpm max	F max [Hz]	Poli Poles	Peso [Kg]
------	------------------	----	----	--------------------	---------------	---------	------------	---------	------------	------------	-----------

—	EFL20 S 4A	16.5	22.5	110	35	1.420	50	8.000	270	4	112
—	EFL20 S 4B	20	27	110	43	1.705	60	8.000	270	4	112
—	EFL20 S 4C	25	34	110	50	2.135	75	8.000	270	4	112

Valori ottenuti mediante simulazione numerica – Data obtained by numerical simulation

Potenze e polarità diversa su richiesta – By request we can manufacture motors with different polarities and horse power