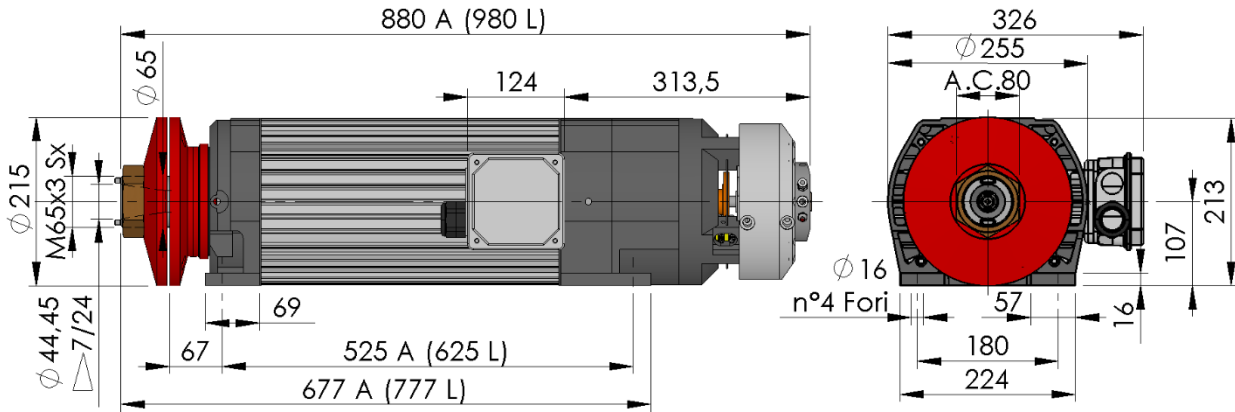


Ingombri – Overall dimensions



Le caratteristiche e le dimensioni inserite nel presente catalogo sono indicative e suscettibili di variazioni – Verniciatura su richiesta. Features and overall dimensions are subject to change – Painting by request.

### Dati principali – Main Specification

|                 |                   |                 |
|-----------------|-------------------|-----------------|
| Potenza         | Power (min / max) | 10 ÷ 18,5 kW    |
| Coppia          | Torque            | 100 – 130 Nm    |
| Vel. massima    | Max Speed         | 6.000 rpm       |
| Cambio utensile | Tool attachment   | ISO 40          |
| Lubrificazione  | Lubrication       | Grease for life |
| Tipo di unità   | Motor unit        | Induction       |
| Raffreddamento  | Cooling           | Servoventilated |
| Cambio utensile | Tool change       | Pneumatic       |

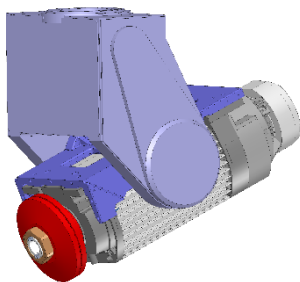
### Caratteristiche – Features

|  |  |
|--|--|
| Albero mandrino forato in acciaio inox                 | Stainless steel spindle bored shaft                  |
| Sistema di isolamento per azionamento tramite inverter | Inverter duty insulation system                      |
| Giunto integrato per raffreddamento utensile           | Rotating water joint for tools cooling               |
| Raffreddamento tramite servoventilatore (brevettato)   | Air cooling through separately driven fan (patented) |

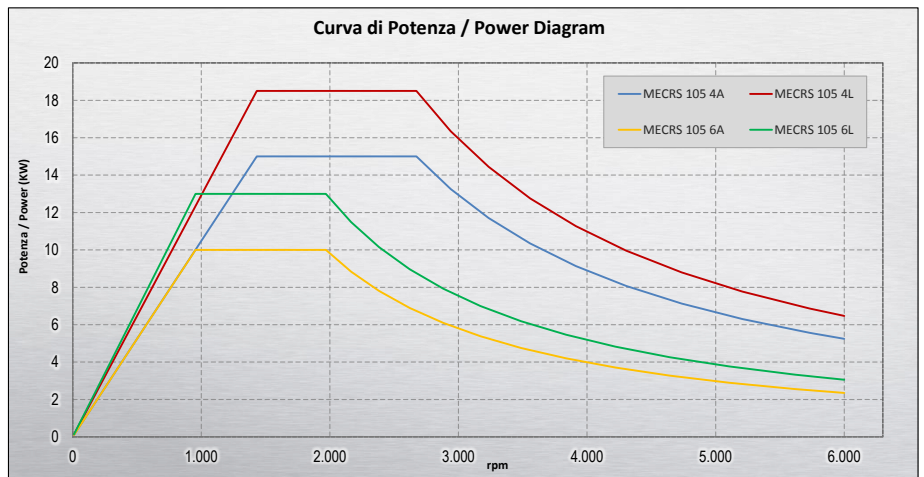
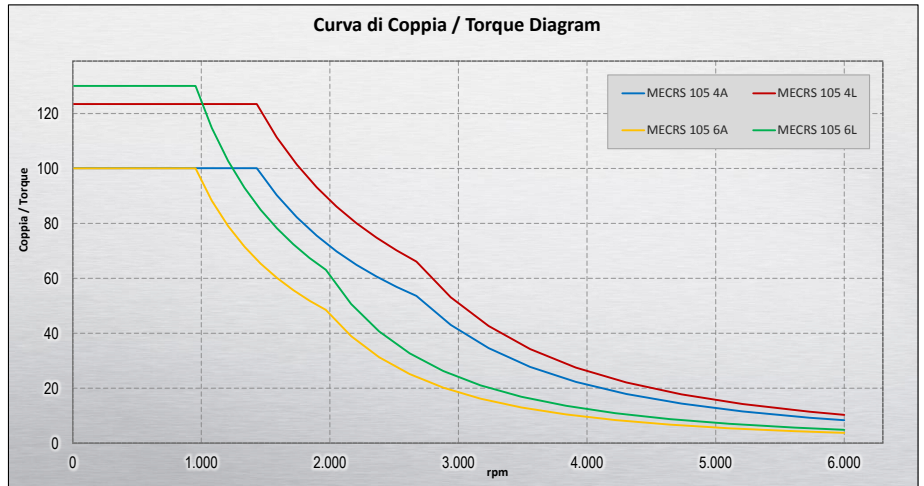
### Option

|  |
|--|
| Encoder feedback 1Vpp                            |
| High resolution TTL incremental encoder (600ppr) |

Typical application



### Curve di coppia e potenza – Torque and Power diagram



| Ref. | Mandrino Spindle | kW   | Cv   | Coppia/Torque [Nm] | I [Amp @400V] | Rpm nom | F nom [Hz] | Rpm max | F max [Hz] | Poli Poles | Peso [Kg] |
|------|------------------|------|------|--------------------|---------------|---------|------------|---------|------------|------------|-----------|
| —    | MECRS 105 4A     | 15   | 20   | 100                | 32            | 1.445   | 50         | 6.000   | 200        | 4          | 140       |
| —    | MECRS 105 4L     | 18,5 | 25   | 123                | 39            | 1.450   | 50         | 6.000   | 200        | 4          | 162       |
| —    | MECRS 105 6A     | 10   | 13,6 | 100                | 24            | 970     | 50         | 6.000   | 300        | 6          | 141       |
| —    | MECRS 105 6L     | 13   | 17,5 | 130                | 29            | 960     | 50         | 6.000   | 300        | 6          | 152       |

Valori ottenuti mediante simulazione numerica – Data obtained by numerical simulation  
Potenze e polarità diversa su richiesta – By request we can manufacture motors with different polarities and horse power